



pearson  
ferrier®



2 BARLOW CLOSE  
Bury, BL9 6WF  
Offers Over £200,000

## 2 BARLOW CLOSE

### Property at a glance

- THREE STORY TOWN HOUSE
- THREE FITTED BEDROOMS (Two with ensuite)
- TWO RECEPTION ROOMS
- DRIVEWAY & GARDENS
- NO ONWARD CHAIN

A modern end three storey townhouse (1 of 3) in a very popular location being less than one mile to Bury town centre and round the corner from Clarence Park and The Lido. The property does require some cosmetic improvements but offers excellent potential to provide a quite substantial family home. The garage has been converted to provide a playroom or home office area, but would be easy to convert back to a garage if required. The property does have gas central heating and upvc double glazing and the accommodation briefly comprises: entrance hall, ground floor shower room off, converted garage, ground floor utility room, ground floor bedroom, first floor landing is the lounge and dining kitchen, then on the second floor there are two double bedrooms both with ensuite facilities. To the outside there are garden areas to the front and rear and a side pathway providing access for bins etc.

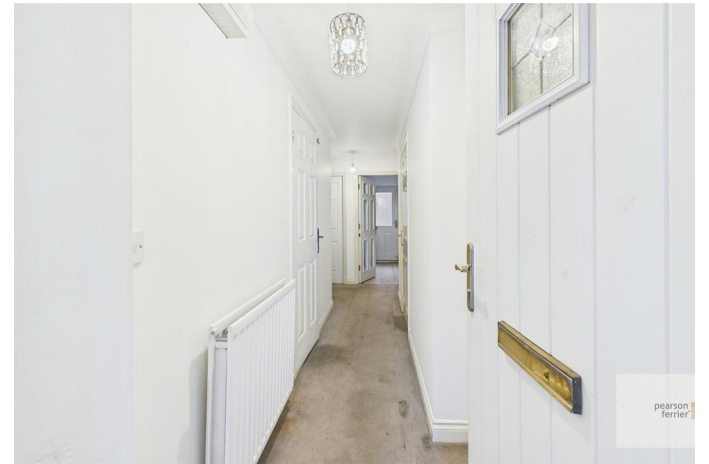
Tenure - Leasehold (Lease term of 155 years, 133 years remaining)

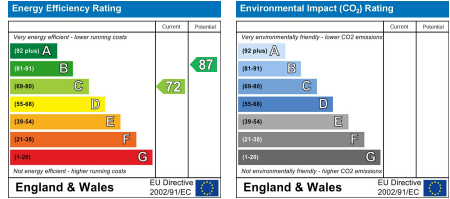
Ground Rent - tbc

Council Tax Banding - C

EPC Rating - C







Bury Office  
 435/7 Walmsley Road, Bury, Lancashire, BL9 5EU  
 Telephone: 0161 764 4440  
 Fax: #  
 Email: bury@pearsonferrier.co.uk

www.pearsonferrier.co.uk



All statements contained in these particulars are for indicative purposes only and are made without responsibility on the part of Pearson Ferrier and the vendors of this property and are not to be relied on as statements or representations of fact. Potential purchasers should satisfy themselves by inspection or otherwise as to the accuracy of such details contained in these particulars.